



# THE PROFESSIONALS

## A GROUP OF TECHNOCRAT PEOPLE



# ABOUT US

**The Professionals – A Group of Technocrat People** is the Project Management & Consultancy division of New Heights Constructions Private Limited, established with the vision of delivering structured, efficient, and result-oriented project management solutions.

Backed by strong construction experience, we bring a practical and execution-focused approach to managing projects across diverse sectors.

We specialize in end-to-end project management and consultancy services, including planning, cost management, quality control, coordination, and timely project execution.

Our team combines technical expertise with on-ground understanding to ensure that every project is handled with precision, transparency, and efficiency from concept to completion.

With experience across pharmaceuticals, healthcare, institutional, commercial, and residential projects, we understand the complexities of modern construction and the importance of delivering projects within defined timelines and budgets.

Our focus is to create value for our clients by ensuring smooth execution, minimizing risks, and maintaining the highest standards of quality.

# OUR SERVICES

01

## Project Management

End-to-end planning, coordination, and execution of projects

02

## Planning & Cost Management

Efficient scheduling, budgeting, and cost control strategies

03

## Quality, Audit & Inspection

Ensuring compliance, quality standards, and performance checks

04

## Design & Interior Consultancy

Functional, aesthetic, and efficient design solutions

05

## Execution Support & Technical Consultancy

On-ground guidance, coordination, and technical expertise

# ONGOING PROJECT

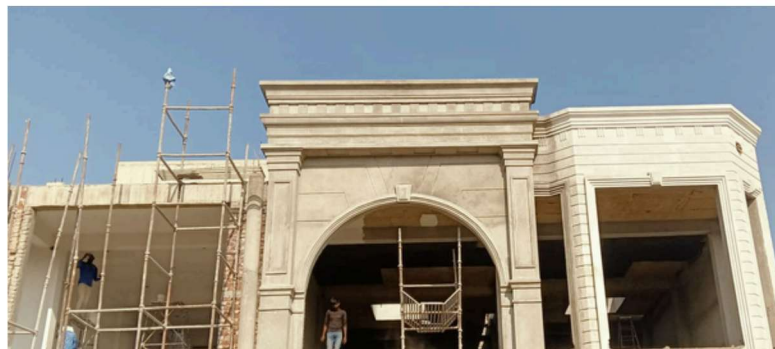
## Somsons Plaza – Premium Shopping Destination

Pakhawal Road, Ludhiana, Punjab

Built-up Area: 63,000 sq. ft.

### PROJECT DETAILS:

- Development of a modern commercial shopping complex.
- External Development: 3 acres of landscaped infrastructure.



# ONGOING PROJECT

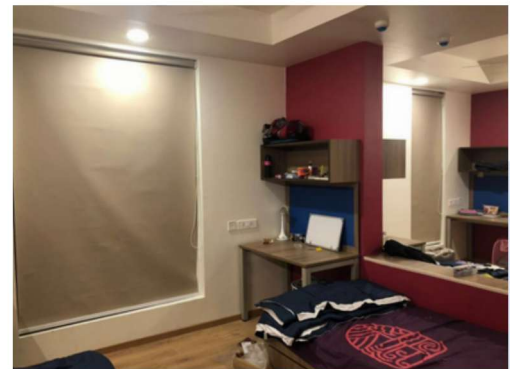
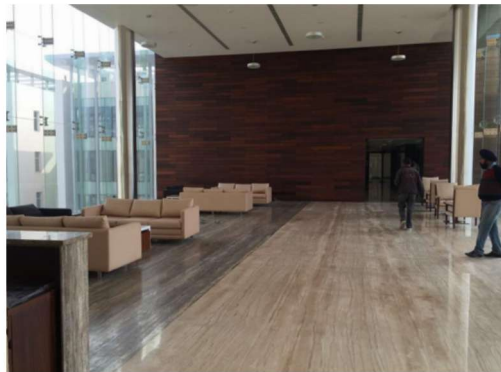
## GD Goenka Signature School

Gurgaon, Haryana

Built-up Area: 2,00,000 sq. ft.

### PROJECT DETAILS:

- Main Building: 90,000 sq. ft.
- Boys Hostel: 25,000 sq. ft.
- Girls Hostel Block: 25,000 sq. ft.
- Sports Complex (Cricket stadium, football stadium, swimming complex, and tennis court): 50,000 sq. ft.



# ONGOING PROJECT

**IAS Academy – Jan Vikas Shiksha Samiti Trust**

Panchkula, Haryana

Built-up Area: 35,000 sq. ft.

Project Details:

- Turnkey execution of the IAS Academy project, including structural development, exterior works, interior works, and complete MEP services comprising plumbing, HVAC, and electrical systems.

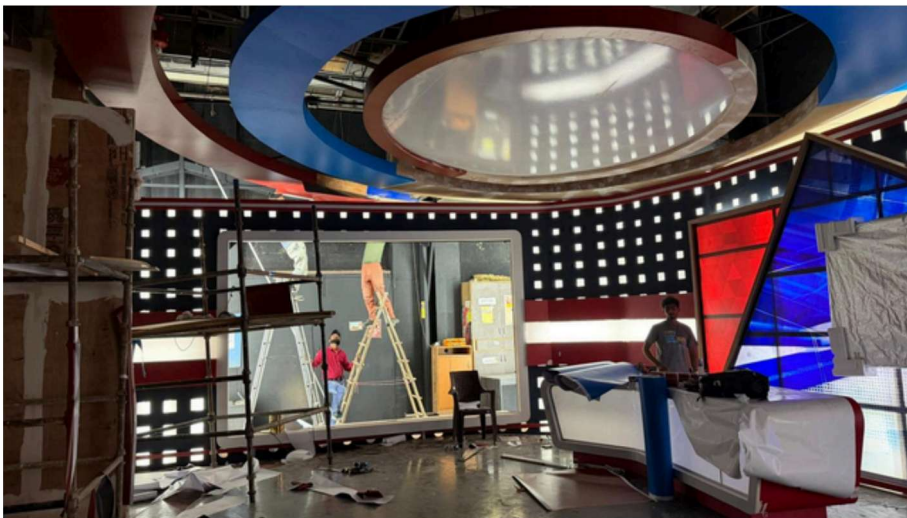


# COMPLETED PROJECT

## GTC Television Studio (Interior Project)

Okhala, New Delhi

Built-up Area: 10,000 sq. ft.



# COMPLETED PROJECT

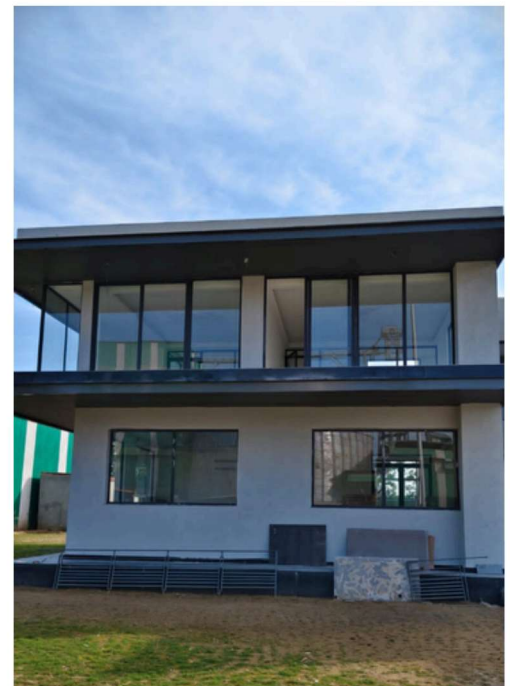
**Harp Chemicals Private Limited**

Dhuri, Sangrur – Punjab

Built-up Area: 9,000 sq. ft.

## PROJECT DETAILS:

- Construction of a new administrative building.
- Scope: Civil, Interiors & all services.



# COMPLETED PROJECT

## Ozone Pharmaceuticals Limited (Turnkey Project)

Baddi, Himachal Pradesh

### PROJECT DETAILS:

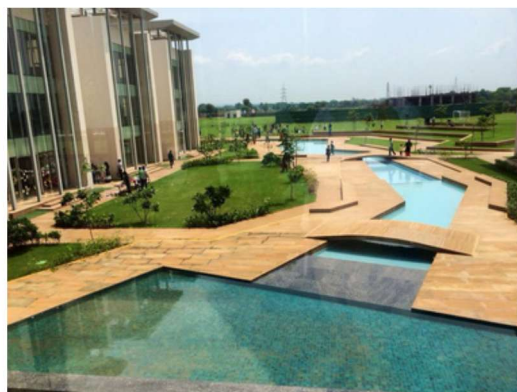
- Construction of pharmaceutical manufacturing unit facility for Liquid ointment & tablet section- Built-up Area: 50,000 sq. ft.
- Office design and interior works.



# COMPLETED PROJECT

GD Goenka University

Gurgaon, Haryana



# COMPLETED PROJECT

## Alkem Laboratories Limited

Baddi, Himachal Pradesh

Built-up Area: 2,00,000 sq. ft.

### PROJECT DETAILS:

- Development of manufacturing units and warehouse facilities.
- Construction of rest house facility.
- Installation of overhead water storage tank for fire safety (Tank Capacity: 500KL).
- Mechanical, electrical, fabrication, waterproofing, and tiling works.



# COMPLETED PROJECT

**Glenmark Pharmaceuticals Limited**

Baddi, Himachal Pradesh

## PROJECT DETAILS:

- Execution of warehouse construction project- Built-up Area: 30,000 sq. ft.
- Expansion of nasal spray unit and semi-solid manufacturing unit- Built-up Area: 50,000 sq. ft.



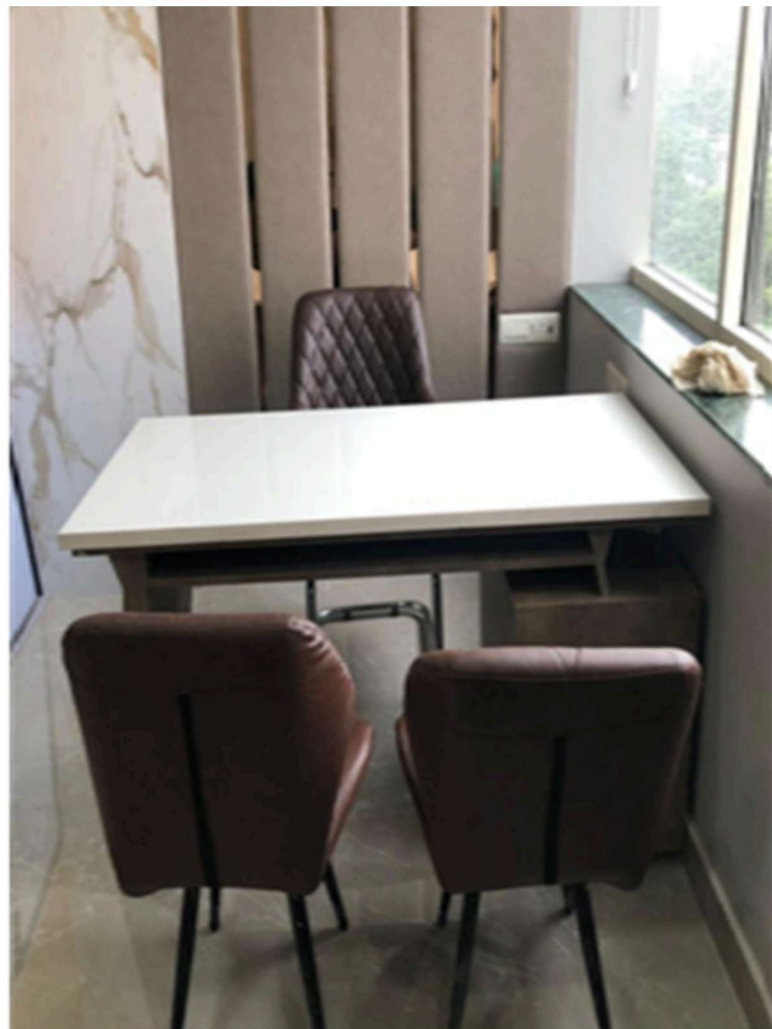
# COMPLETED PROJECT

## Escorts Heart & Super Speciality Hospital (Interior Project)

Mohali, Punjab

### PROJECT DETAILS:

- Development of Endoscopy Ward infrastructure and ERCP procedure facilities.
- Complete interior execution including custom furniture and finishes.
- Design and fabrication of chairs, tables, and wall paneling.



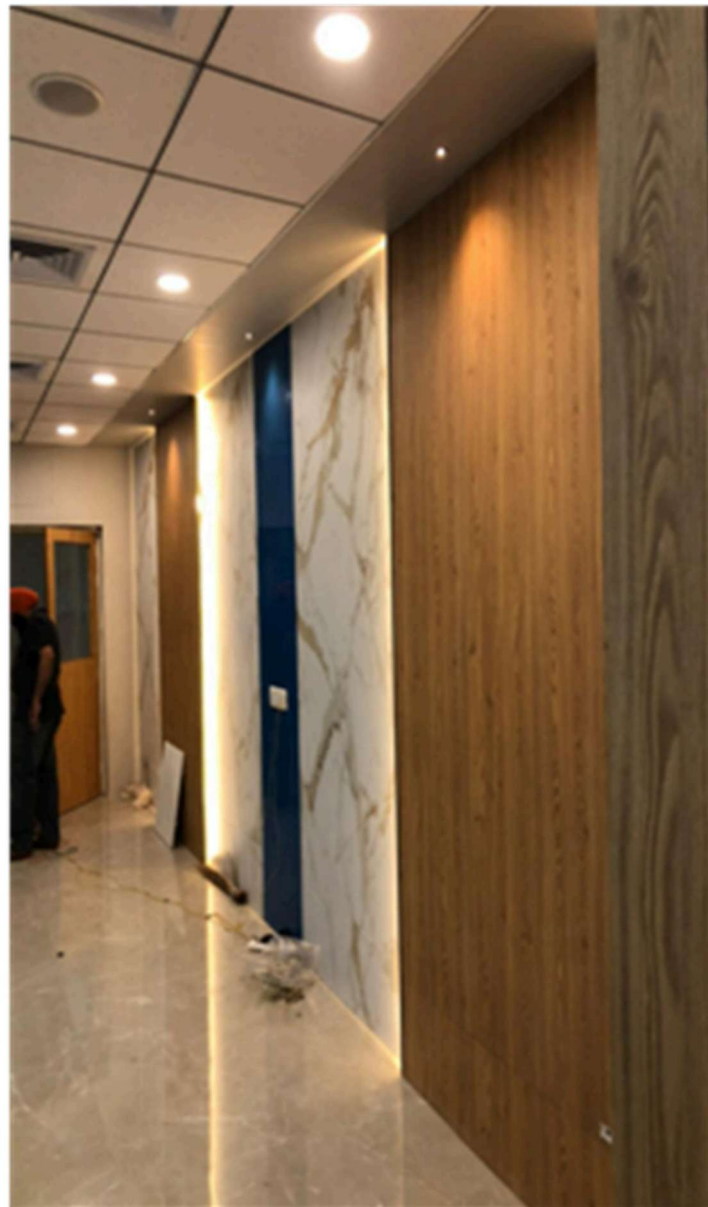
# COMPLETED PROJECT

Babies & US IVF & ICSE Centre (Interior Project)

Mohali, Punjab

PROJECT DETAILS:

- Construction and development of IVF Bloom Centre.



# COMPLETED PROJECT

## 4 Kanal Luxury Residential House

Mohali, Punjab

Built-up Area: 30,000 sq. ft.

External Development: 1 acre landscaped area



# COMPLETED PROJECT

## Residential Development (279 Flats)

Sector 31, Panchkula, Haryana

Water Tank Capacity: 500 KL

### PROJECT DETAILS:

- Construction of underground RCC water tank.
- Development of boundary wall, roads, and parking areas.
- Provision and laying of water supply and DI pipeline systems.
- Implementation of rainwater harvesting system.
- Mechanical, electrical, and fabrication works.
- Associated civil and infrastructure development.



# COMPLETED PROJECT

## Mega Food Park

Ludhiana, Punjab

Water Storage Capacity: 2,00,000 litres

### PROJECT DETAILS:

- Construction of underground and overhead RCC water tanks.
- Development of main pumping station water tank.
- Installation of mechanical fittings, submersible pumps, electrical panels, and fabrication works.



# COMPLETED PROJECT

## Royal Enfield Showroom

Zirakpur, Punjab

Built-up area: 10,000 sq. ft.



## Tourist Visa Office

Mohali, Punjab

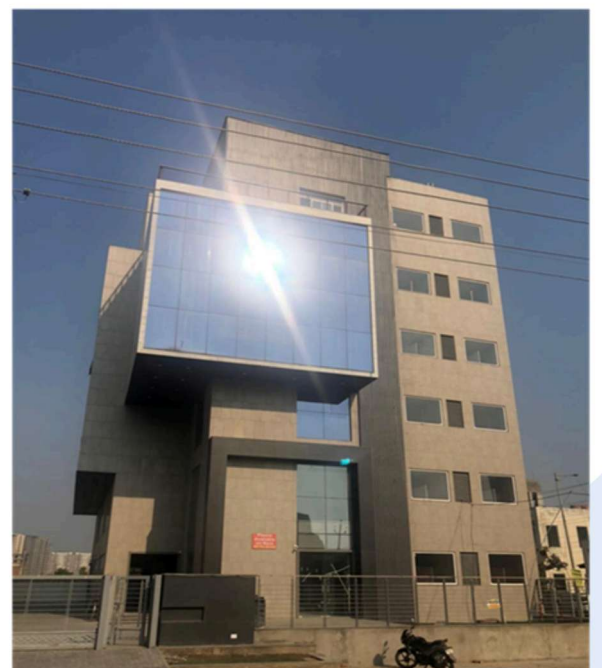
Built-up area: 20,000 sq. ft.



## Commercial Showroom

Mohali, Punjab

Built-up area: 20,000 sq. ft.



# COMPLETED PROJECT

## Hotel 67

Zirakpur, Punjab



## Hotel Metro 43

Chandigarh



## Pollux Tower

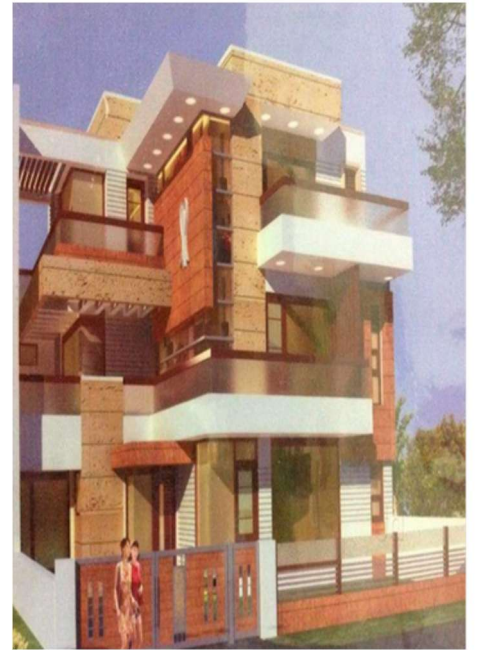
Mohali, Punjab



# COMPLETED PROJECT

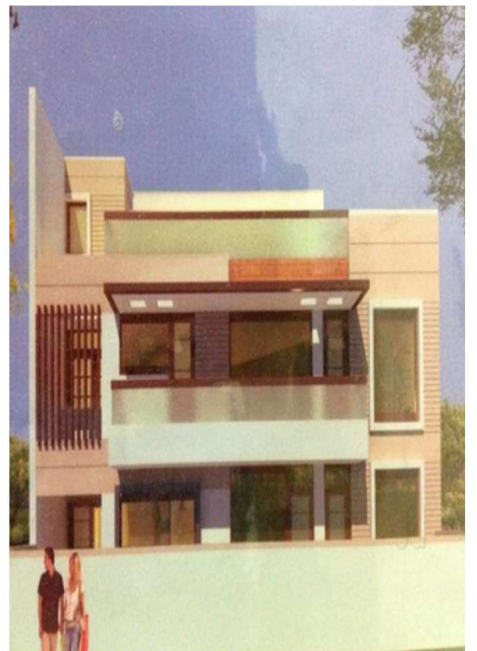
## Residential House

Panchkula, Haryana



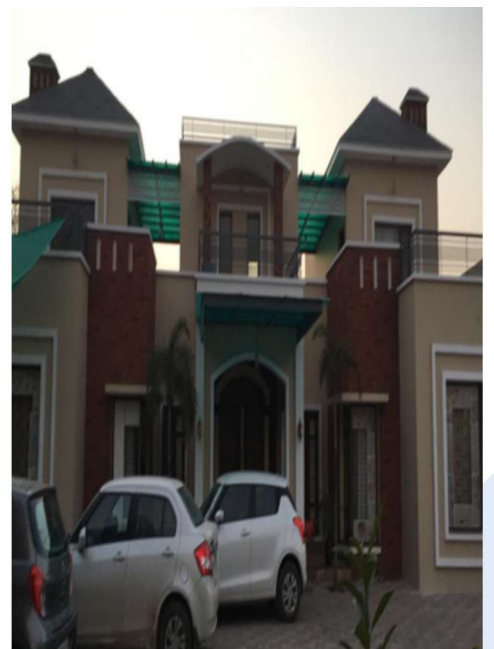
## Residential House

Panchkula, Haryana



## Residential House

Mohali, Punjab



# WHY CHOOSE US

Delivering Excellence in Every Project

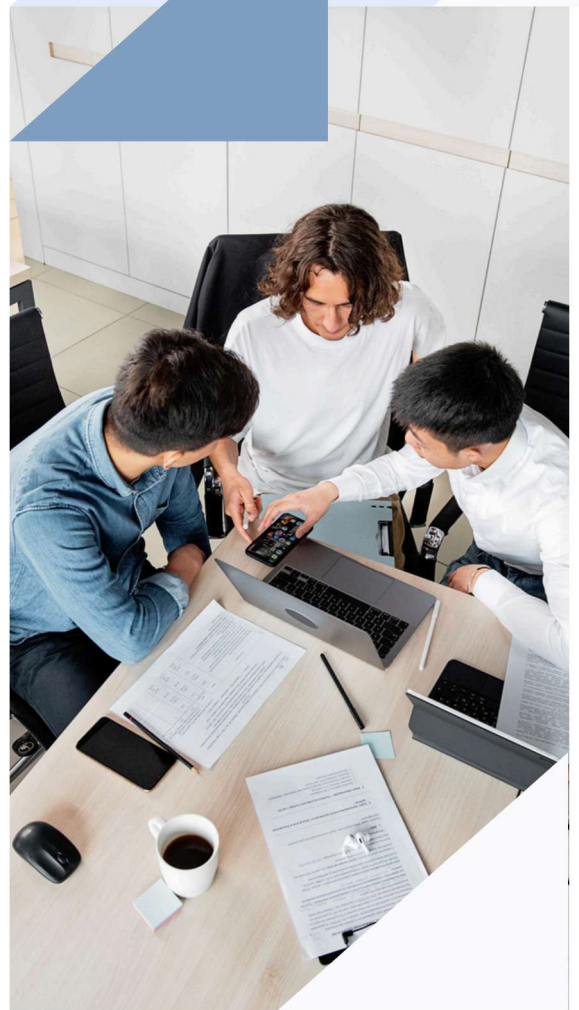
Execution-Backed consultancy with real construction experience.

Strong focus on planning, cost control, and timelines.

Hands-on involvement and site level understanding.

Transparent communication and reporting.

Proven track record across diverse sectors.



# TRUSTED BY LEADING ORGANIZATIONS

Delivering excellence across multiple sectors including pharmaceuticals, healthcare, infrastructure, and education.



# THANK YOU



SCO-19, 2nd Floor, Sector-11,  
Panchkula, Haryana, 134109



[newheightsconstructions.pkl](https://www.instagram.com/newheightsconstructions.pkl)



[pmcprofessionals11@gmail.com](mailto:pmcprofessionals11@gmail.com)



[nhprofessionals.com](http://nhprofessionals.com)



Gurinder Singh - 9888608714  
R.P Rana - 8288073535